

GSIS Secondary School Profile

451 YeongTong-Ro, YeongTong-Gu, Suwon-City,
Gyeonggi-Do, Republic of Korea 16706

Tel. +(82) 31 695 2800
Fax. +(82) 31 205 5736
CEEB Code : 682018
IBO School Code : 3708

Assistant Head of School

Brian Brumsickle

Secondary School Principal

James Paul Rader

Assistant Principal / MYP Coordinator

Darryl Harding

DP Coordinator

Glauce Serralvo

College Counselor

Keisha Rogers



GYEONGGI SUWON
INTERNATIONAL SCHOOL



The School

Gyeonggi Suwon International School (GSIS) opened its doors in 2006 as a result of a partnership between its Board of Trustees, Gyeonggi Province and Suwon City. The Mission of the School is as follows:

"Gyeonggi Suwon International School provides international students a high quality internationally based education within a Christian environment utilizing positive educational experiences and biblical foundations for spiritual growth."

Because each student is recognized as a person made in the image of God, Christian education should foster self-respect and self-worth as well as respect and esteem for others. For this reason, the goal of GSIS is to provide a quality educational environment in which each student's unique gifts of intellect, personality, stature, and spirit are given the best opportunities for development toward maturity. GSIS bases its philosophy on basic Christian beliefs.

Student Body

The GSIS Secondary School Division is a fully comprehensive 6-12 secondary school enrolling over 265 students from 16 countries. The Class of 2017 has an average of 50-plus students from Canada, India, Japan, Thailand, Korea and the United States.

Faculty

GSIS has over 90 faculty members, with over 50 in the secondary division. More than 67% of the secondary school staff have advanced degrees. The GSIS international faculty is from Australia, Brazil, Canada, China, India, Korea, Mauritius, New Zealand, Romania, United Kingdom, Taiwan, the United States, and Venezuela.

Calendar

The GSIS academic year consists of 181 instructional days where students attend five 70 minutes classes per school day. Students who take the IB Diploma Program courses have additional class meetings of either 70 minutes for Higher Level courses or 35 minutes for Standard Level courses per cycle.

The school year is divided into two semesters for assessment purposes: August to December and January to June. First semester is reported as a cumulative progress report. Final course grades are reported at the end of the second semester.

Curriculum

The secondary school division provides a college preparatory program with the expectation that students will pursue higher education. GSIS believes offering the International Baccalaureate Programs give the students a holistic education where they will continue their growth as life long learners giving back to the global community. GSIS has been authorized since 2009 to deliver the Diploma Program and since 2012 to deliver the Middle Years Program. The first cohort in the Diploma Program was completed in May 2011. Other special programs offered at GSIS include: a 21st century education, where students experience learning through 1:1 laptop and iPad interface, an English Language Learner (ELL) program, and a special educational needs program for applicants that qualify.

Co-Curricular Activities

Co-curricular opportunities for student involvement include, but are not limited to: basketball, cheerleading, cross-country, Global Issues Network, Mission and service trips, Model United Nations, National Honor Society, newspaper, Praise Team, soccer, Student Council Association, swimming, tennis, volleyball, and yearbook. GSIS students have competed and travelled to various countries where they have received awards for their endeavors and service through these programs. A graduation requirement for all juniors and seniors is active participation, logging, and journaling to complete the Creativity, Activity, and Service (CAS) requirement.

ACSI – Association of Christian Schools International (Boarding Accreditation)

ASCD – Association for Supervision & Curriculum Development

CBIS – College Board International School

CS & PN – Child Safety and Protection Network

EARCOS – East Asia Regional Council of Overseas Schools

IBO – International Baccalaureate Organization (IB Diploma Authorized)

KAIAC – Korean-American Interscholastic Activities Conference

NACAC – National Association of College Admissions Counselors

NAIS – National Association of Independent Schools

ROK Ministry of Education – Korean Educational Certification (in-ga)

WASC – Western Association of Schools and Colleges (School Accreditation)

Reporting System

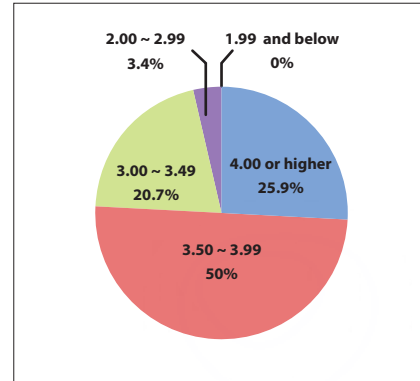
Achievement levels are recorded on student transcripts at the end of each course. Credits from previous schools attended are included on the transcript. Cumulative GPA, based on a 4.0 scale is calculated for achievement levels earned only at GSIS. IB Higher Level (HL) courses have the GPA weighted 0.5 points and IB Standard Level (SL) 0.25 points.

GSIS awards a modified diploma to students that have an IEP and courses that have been adapted. Students that take a performance course (music, art, etc.) or students transferring into GSIS that have failed to complete a full quarter of assessed work will be given a mark of "S (Satisfactory)" or "U (Unsatisfactory)". Students who are taking online courses under a teacher's supervision at GSIS that is considered a Language support course, a required online course, School Supported Self Taught (SSST) in the Diploma Program, or Theory of Knowledge (TOK) who meet the requirements of a credit toward graduation may receive a "P (Pass)" or "F (Fail)".

GPA Equivalency Scale Based on the IB 1-7 Grading Scale for 2012 and Beyond			
1-7 Level	GRADE	IB SL/Extended Scale	IB HL Scale
7	4.00	4.25	4.50
6	3.75	4.00	4.25
5	3.25	3.50	3.75
4	2.75	3.00	3.25
3	2.25	2.50	2.75
2	1.25	1.50	1.75
1	0.00	0.00	0.00

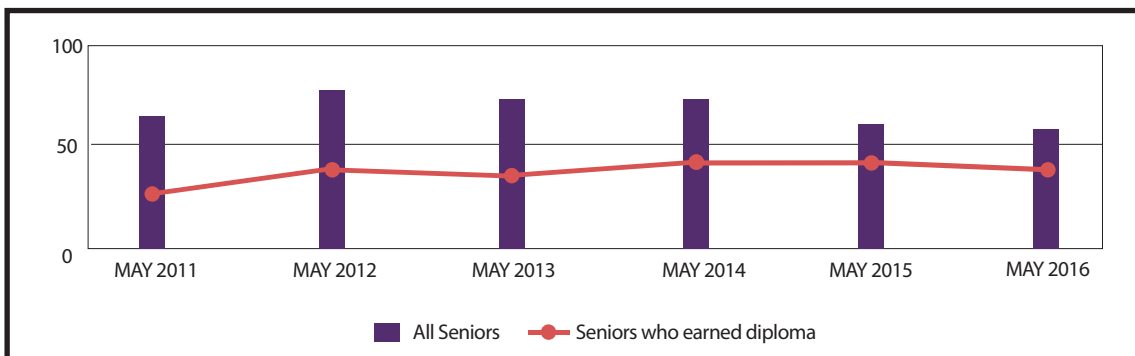
Cumulative GPA Distribution for the Class of 2016

GPA	PERCENTAGE
4.00 or higher	25.9%
3.50 ~ 3.99	50.0%
3.00 ~ 3.49	20.7%
2.00 ~ 2.99	3.4%
1.99 and below	0.0%



IB Diploma Results 2011-16

	% of Candidates Awarded the IB Diploma	Average Total Points Scored for IB DP Earned Students	Average Grade Scored for IB DP Earned Students	Number of Diploma Candidates	Number of Students Taking IB Exams
MAY 2011	85	30	4.8	27	63
MAY 2012	78	32	4.99	40	78
MAY 2013	81	30	4.86	37	75
MAY 2014	79	31	5	43	72
MAY 2015	71	31	5.01	44	60
MAY 2016	87	32	5.17	46	52



Course List 2016-2017 School Year

(GSIS Secondary Division Gr.9-12)

DEPARTMENT	GSIS COURSES		DP COURSES	
English (4 credits required)	IB MYP English 4A HS IB MYP English Lang & Lit 9 IB MYP English Lang & Lit 10 Publications		IB DP English B HL IB DP English B HL2 IB DP English B SL IB DP English B SL2 IB DP English LangLit HL IB DP English LangLit HL2	IB DP English LangLit SL IB DP English LangLit SL2 IB DP Hindi Lit SL2 IB DP Japanese Lit SL2 IB DP Mandarin Lit SL IB DP Thai Lit SL2
Math (3 credits required)	IB MYP 3 Geometry IB MYP 4 Algebra 2 IB MYP 4 Algebra 2 Extended	IB MYP 5 Pre-Calculus IB MYP 5 Pre-Calculus Extended	IB DP Math HL IB DP Math HL2 IB DP Math SL IB DP Math SL2	IB DP Math Studies SL IB DP Math Studies SL2
Science (3 credits required)	IB MYP Biology IB MYP Chemistry IB MYP Physics		IB DP Biology HL IB DP Biology HL2 IB DP Biology SL IB DP Biology SL2 IB DP Chemistry HL IB DP Chemistry HL2 IB DP Chemistry SL IB DP Chemistry SL2	IB DP Design Technology HL IB DP Design Technology HL2 IB DP Design Technology SL IB DP Design Technology SL2 IB DP Env Sys and Soc SL2 IB DP Physics HL2 IB DP Physics SL IB DP Physics SL2
Social Studies (3 credits required)	IB MYP Economics IB MYP US History & Governments IB MYP World History Psychology		IB DP Bus & Management SL IB DP Bus & Management SL2 IB DP Economics SL IB DP Economics SL2 IB DP World History HL IB DP World History HL2	IB DP World History SL IB DP World History SL2 IB DP ITGS HL2 IB DP ITGS SL2
World Language (2 credits required)	IB MYP Korean 3A IB MYP Korean 3B IB MYP Korean 4A IB MYP Korean 4B IB MYP Korean Lang & Lit 9 IB MYP Korean Lang & Lit 10 IB MYP Mandarin 1 HS IB MYP Mandarin 2 HS IB MYP Mandarin 3A	IB MYP Mandarin 3B IB MYP Mandarin 4A IB MYP Mandarin 4B IB MYP Mandarin 5 IB MYP Spanish 1 HS IB MYP Spanish 2 HS IB MYP Spanish 3A IB MYP Spanish 3B IB MYP Spanish 4A	IB DP Korean B HL IB DP Korean B HL2 IB DP Korean B SL IB DP Korean B SL2 IB DP Korean LangLit HL IB DP Korean LangLit HL2 IB DP Korean LangLit SL IB DP Korean LangLit SL2	IB DP Mandarin B HL IB DP Mandarin B HL2 IB DP Mandarin B SL IB DP Mandarin B SL2 IB DP Spanish Ab initio IB DP Spanish Ab initio 2 IB DP Spanish B HL IB DP Spanish B SL
Religious Studies (3.5 credits required)	Bible 9 Bible 10 Bible 11 Bible 12		IB DP Theory of Knowledge 1 IB DP Theory of Knowledge 2	
Fine Arts (1 credit required)	IB MYP Drama 9 IB MYP Drama 10 IB MYP Music 9 IB MYP Music 10 IB MYP Visual Arts 9 IB MYP Visual Arts 10 2D Design 1 2D Design 2	3D Art Choir Concert Band Drawing and Painting 1 Drawing and Painting 2 Strings Symphonic Band Theater Arts	IB DP Music HL IB DP Music HL2 IB DP Music SL2 IB DP Theatre HL IB DP Theatre HL2 IB DP Theatre SL	IB DP Visual Arts HL IB DP Visual Arts HL2 IB DP Visual Arts SL IB DP Visual Arts SL2
PE/Health (1 credit required)	IB MYP Physical & Health Education 9 IB MYP Physical & Health Education 10 Individual Sport	Personal Fitness Team Sports		
Tech (1 credit required)	IB MYP Design 9 IB MYP Design 10			

Graduation Requirements

A diploma will be granted to each student who has completed the following:

- Attended GSIS for at least the entire final semester of his/her 12th grade year
- Satisfactorily completed 27.5 credits during his/her 9th to 12th grade career
- Satisfactorily reflects a record that meets the behavior management code of conduct
- Satisfactorily has met the attendance requirements for obtaining credit
- Paid in-full fees and tuition owed to GSIS
- Completion of the CAS Program as prescribed by IB DP

Subject Area and Graduation Requirements for GSIS

Subject Area	Credit
English	4
Math	3
Science	3
Social Studies	3
World Language	2
Religious Studies	3.5
Fine Arts	1
PE/Health	1
Electives	6
Design Technology	1
Total	27.5

Transferred-in Students

Students who enter GSIS and have an average of fewer than 7 high school courses per year are subject to the following requirements:

Subject Area	Credit
English	4
Math	3
Science	3
Social Studies	3
World Language	2
Religious Studies	0.5
Fine Arts	1
PE/Health	1
Electives	10
Design Technology	0
Total	27.5

University Acceptances & Matriculations

(Based upon student reported data; includes conditional offers)

Australia

Australian National University
Monash University
The University of Sydney
University of Melbourne
University of Queensland

Canada

Emily Carr University of Art and Design
Langara College
McGill University
Queen's University
Simon Fraser University
Trinity Western University
University of Alberta
University of British Columbia
University of Brock
University of Calgary
University of Ottawa
University of Saskatchewan
University of the Fraser Valley
University of Toronto
University of Waterloo
University of Western Ontario
University of Windsor
York University

France

Ecole de Design Nantes Atlantique

Germany

Albert-Ludwigs-Universität Freiburg
Georg-August-Universität Göttingen
Goethe-Universität Frankfurt am Main
Rheinische Friedrich-Wilhelms-Universität Bonn
Ruprecht-Karls-Universität Heidelberg

Hong Kong

City University of Hong Kong
The Chinese University of Hong Kong
The Hong Kong Polytechnic University
The Hong Kong University of Science and Technology
University of Hong Kong

Japan

Akita International University
International Christian University, Japan
Keio University
Kobe University
Meiji University
Ritsumeikan Asia Pacific University
Sophia University, Japan
University of Oklahoma
University of Tsukuba
Waseda University

Netherlands

Universiteit Maastricht
Universiteit Utrecht

Singapore

Yale-NUS College

South Korea

Chung-Ang University
Duksung Women's University
Ewha Womans University
George Mason University Korea campus
Handong Global University
Korea University
Kyung Hee University
Myeongji University
Sookmyung women's University
Soongsil University
Sungkyunkwan University
SUNY Korea
University of Utah Korea campus
Yonsei University

Switzerland

École Polytechnique Fédérale de Lausanne
Glon Institute of Higher Education
Le Cordon Bleu
Les Roches-Gruyere University
Swiss School of Tourism and Hospitality

Thailand

Stamford International University - Bangkok Campus

U.K.

Camberwell College of Arts
Central Saint Martins College of Art and Design
Coventry University
Durham University
Goldsmiths, University of London
Imperial College London
King's College London
Kingston University
Leeds College of Music
London College of Fashion
Queen Mary, University of London
The Liverpool Institute for Performing Arts
The London School of Economics and Political Science
The University of Edinburgh
The University of Manchester
The University of Sheffield
The University of Warwick
University College London
University of Bath
University of Bristol
University of Exeter
University of Glasgow
University of Kent
University of Leeds
University of London
University of St. Andrews
University of the Arts of London, Central Saint Martins
University of Westminster
Wimbledon College of Art

USA

Academy of Art University
Adelphi University
Albany College of Pharmacy and Health Sciences
Albion College

Alfred University
American University
Arizona State University
Art Center College of Design
Arts Academy of Cincinnati
Auburn University
Babson College
Bard College
Bates College
Baylor University
Berklee College of Music
Biola University
Boston College
Boston University
Bowdoin College
Bowling Green State University
Brandeis University
Brigham Young University, Idaho
Brigham Young University, Provo
Brown University
California Baptist University
California College of the Arts, Oakland
California College of the Arts, San Francisco
California Institute of the Arts
California State Polytechnic University, Pomona
California State University, Long Beach
Calvin College
Carleton College
Carnegie Mellon University
Case Western Reserve University
Cedarville University
Chapman University
City University of New York
Claremont McKenna College
Colgate University
College for Creative Studies
College of William and Mary
Columbia College Chicago
Columbia University
Columbus College of Art and Design
Columbus State University
Cornell University
Crown College
Dakota State University
Dallas Baptist University
Depaul University
Dickinson College
Drexel University
Duquesne University
Eastern Michigan University
Embry Riddle Aeronautical University
Emerson College
Emory University
Fashion Institute of Design and Merchandising, Los Angeles
Fashion Institute of Technology
Fordham University
Fullerton College
George Fox University
George Mason University
Georgetown University
Georgia Institute of Technology
Georgia State University
Gordon College
Grinnell College
Hamilton College
Hampshire College
Hampton University
Hawaii Pacific University
Hult International Business School
Illinois State University
Indiana University at Bloomington
Indiana University of Pennsylvania
Indiana University-Purdue University Indianapolis
Iowa State University
Irvine Valley College
Jamestown Community College
John Brown University
Johns Hopkins University
Johnson and Wales University
Kansas State University
Kenyon College
Knox College
Lehigh University
Lesley University
Liberty University
Loyola Marymount University
Marquette University
Maryland Institute College of Arts
Massachusetts College of Art and Design
MCPS - Massachusetts College of Pharmacy and Health Sciences
Miami University, Ohio
Michigan State University
Minerva Schools at KGI
Musicians Institute
New York University
North Carolina State University
Northeastern University
Northwestern University
Oberlin College
Ohio Northern University
Ohio University
Oregon State University
Otis College of Art and Design
Ouachita Baptist University
Oxford College of Emory University
Pace University, New York City
Parsons the New School for Design
Pennsylvania State University, Altoona
Pennsylvania State University, Erie
Pennsylvania State University, University Park
Pennsylvania State University, World Campus
Pepperdine University
Pitzer College
Portland State University
Pratt Institute
Purdue University
Reed College
Rensselaer Polytechnic Institute

Rhode Island School of Design
Rice University
Ringling College of Art and Design
Rochester Institute of Technology
Rutgers, The State University of New Jersey at Camden
Rutgers, The State University of New Jersey at Newark
Rutgers, The State University of New Jersey at Newark
Saint John's University, Minnesota
Samford University
San Diego State University
San Francisco Art Institute
Savannah College of Arts and Design
School of the Art Institute of Chicago
School of the Museum of Fine Arts
School of Visual Arts, New York City
Seattle Pacific University
Smith College
Southern California Institute of Architecture
Southern Illinois University at Carbondale
Southern Methodist University
Stevens Institute of Technology
St. Bonaventure University
St. John's University
St. Louis College of Pharmacy
Suffolk University
SUNY Albany
SUNY Binghamton
SUNY Brockport
SUNY Buffalo
SUNY Stony Brook
Syracuse University
Taylor University
Temple University
Texas A&M University
The Art Institute of Seattle
The City College of New York
The George Washington University
The New School
The Ohio State University
The Peabody Institute of Johns Hopkins University
The University of Arizona
The University of Georgia
The University of Iowa
The University of Texas, Austin
The University of the Arts
The University of Vermont
Towson University
Tufts University
Union University
University of Akron
University of California, Berkeley
University of California, Davis
University of California, Irvine
University of California, Los Angeles
University of California, Merced
University of California, Riverside
University of California, San Diego
University of California, Santa Barbara
University of California, Santa Cruz
University of Cincinnati
University of Colorado, Boulder
University of Connecticut
University of Delaware
University of Denver
University of Hartford
University of Hawaii
University of Houston
University of Illinois at Chicago
University of Illinois at Urbana-Champaign
University of Kentucky
University of Maryland, Baltimore County
University of Maryland, College Park
University of Massachusetts, Amherst
University of Massachusetts, Boston
University of Massachusetts, Dartmouth
University of Massachusetts, Lowell
University of Miami
University of Michigan, Ann Arbor
University of Michigan, Dearborn
University of Minnesota, Twin Cities
University of Nevada, Las Vegas
University of Nevada, Reno
University of Notre Dame
University of North Carolina at Chapel Hill
University of North Carolina at Charlotte
University of Oregon
University of Pittsburgh
University of Portland
University of Rhode Island
University of Richmond
University of Rochester
University of San Diego
University of San Francisco
University of Southern California
University of Tampa
University of Texas at Dallas
University of the Pacific
University of the Sciences in Philadelphia
University of Utah
University of Virginia
University of Washington, Seattle
University of Washington, Tacoma
University of Wisconsin, Madison
Utica College
Vanderbilt University
Villanova University
Virginia Commonwealth University
Virginia Polytechnic Institute and State University
Wake Forest University
Washington State University
Washington University in St. Louis
Wellesley College
West Virginia University, Morgantown
Westminster College
Westmont College
Wheaton College
Willamette University
Williams College